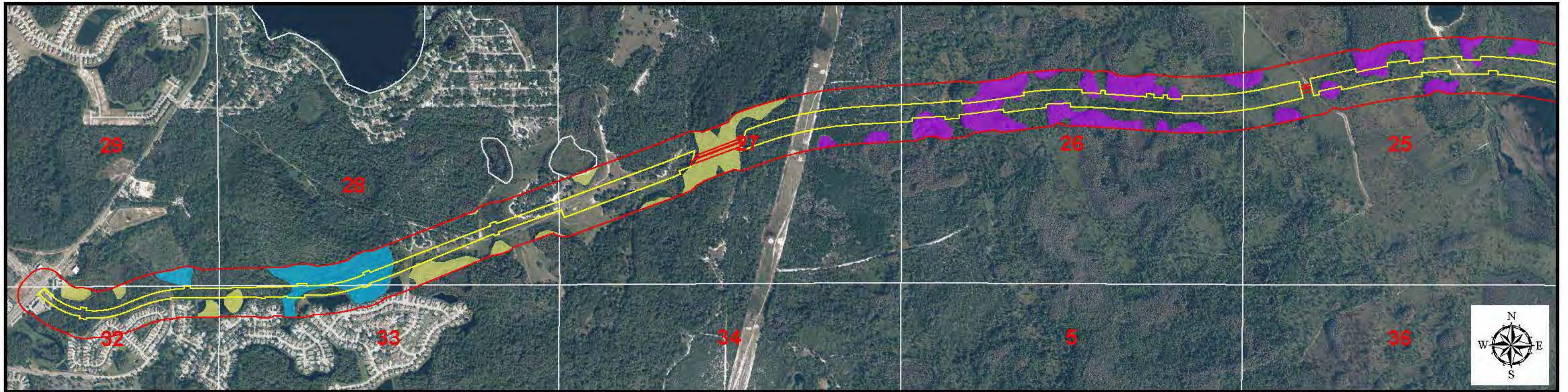


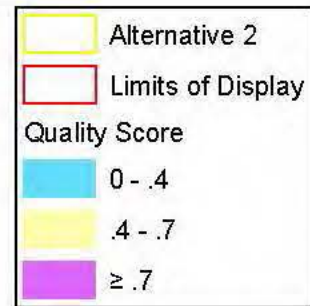
**Map Set F-10**

Wetland Quality Scores, Alternatives 2-17



Alternative 2. Wetland Quality Score.

0 750 1,500 3,000 Feet



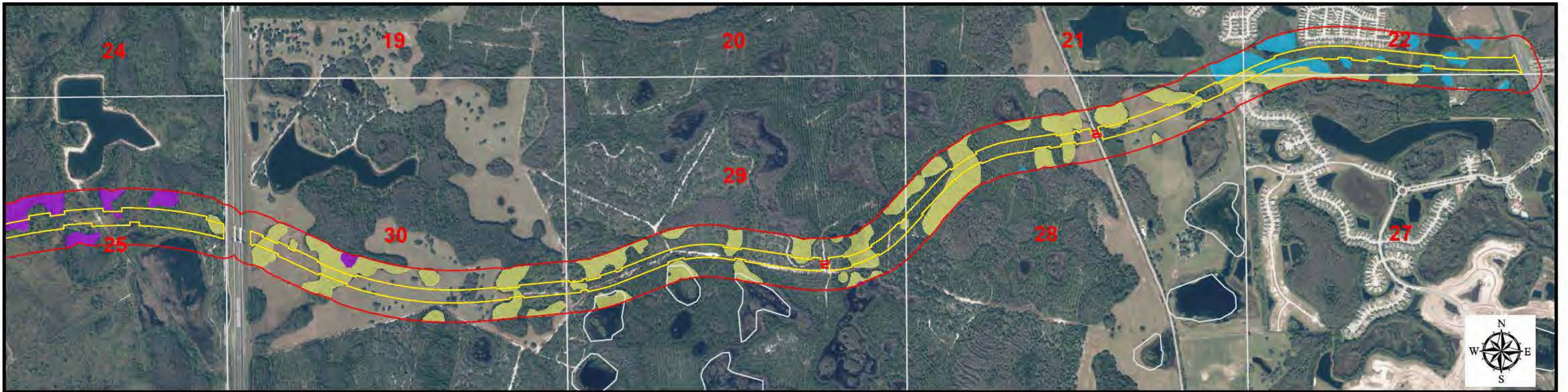
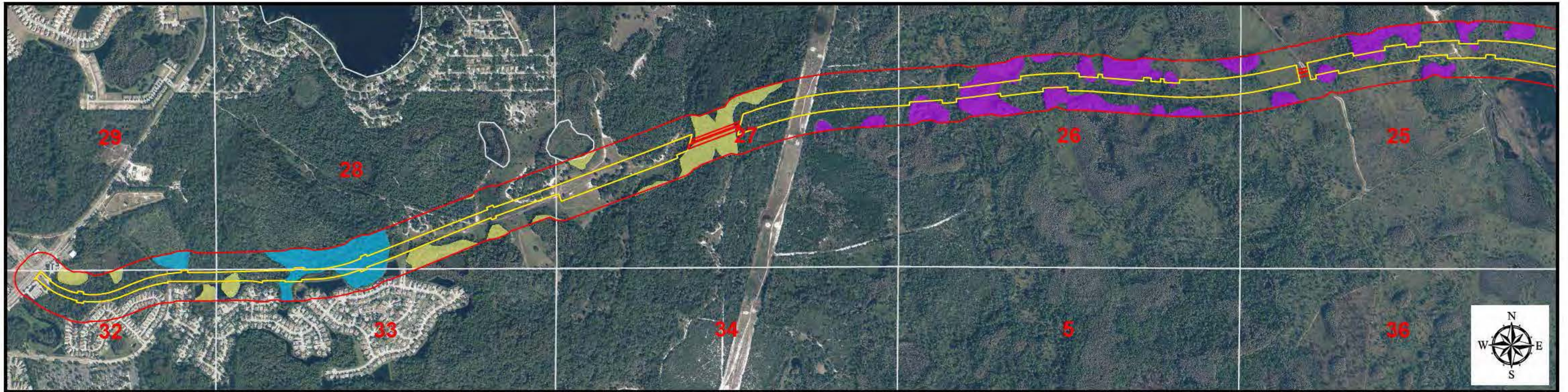
Pasco County Florida



Ridge Road Extension  
Alternatives Analysis

Drawn Dec. 2014

Project Number: 5504405 P OF Docment: Alt\_10\_wetland\_1\_20141124.pdf



**Alternative 3. Wetland Quality Score**

0 750 1,500 3,000 Feet

- Alternative 3
- Area of Analysis
- 0 - .4
- .4 - .7
- ≥ .7

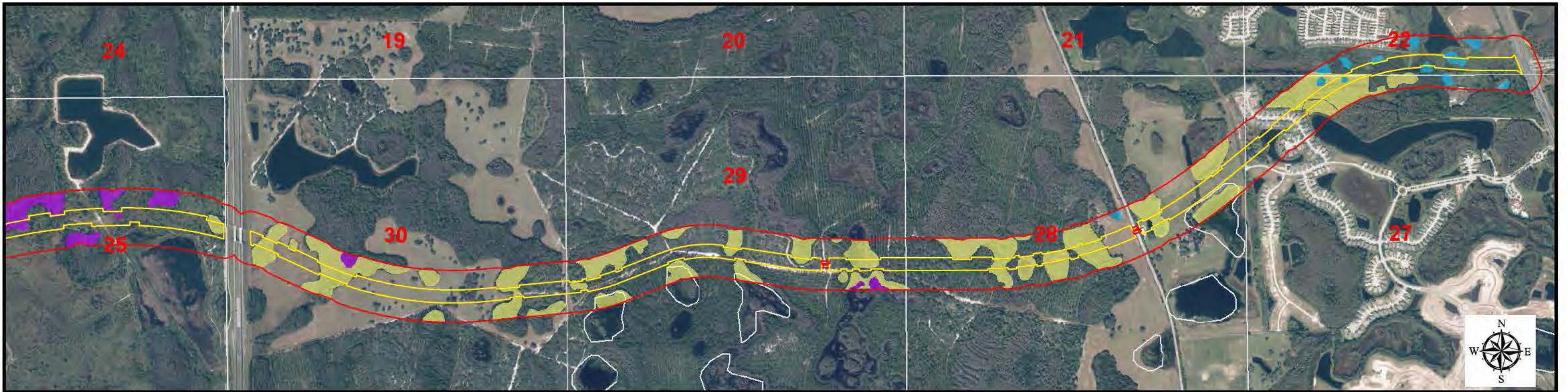
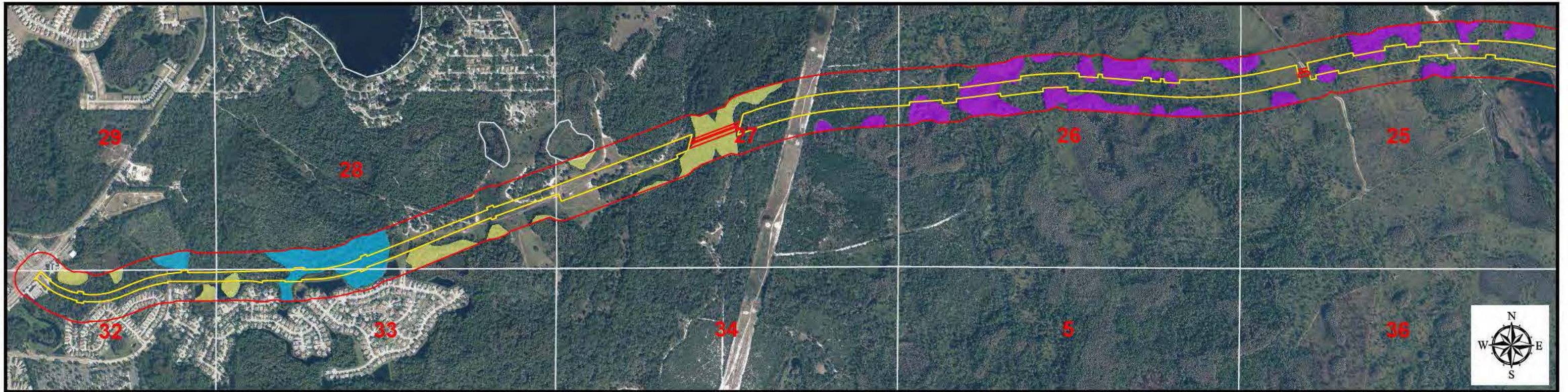
**Pasco County Florida**



**Ridge Road Extension  
Alternatives Analysis**

Drawn Dec. 2014

Project Number 5504-005 PDF Document Alt\_10\_wetlands\_1\_20141124.pdf



**Alternative 4. Wetland Quality Score**

0 750 1,500 3,000 Feet

- Alternative 4
- Area of Analysis
- 0 - .4
- .4 - .7
- ≥ .7

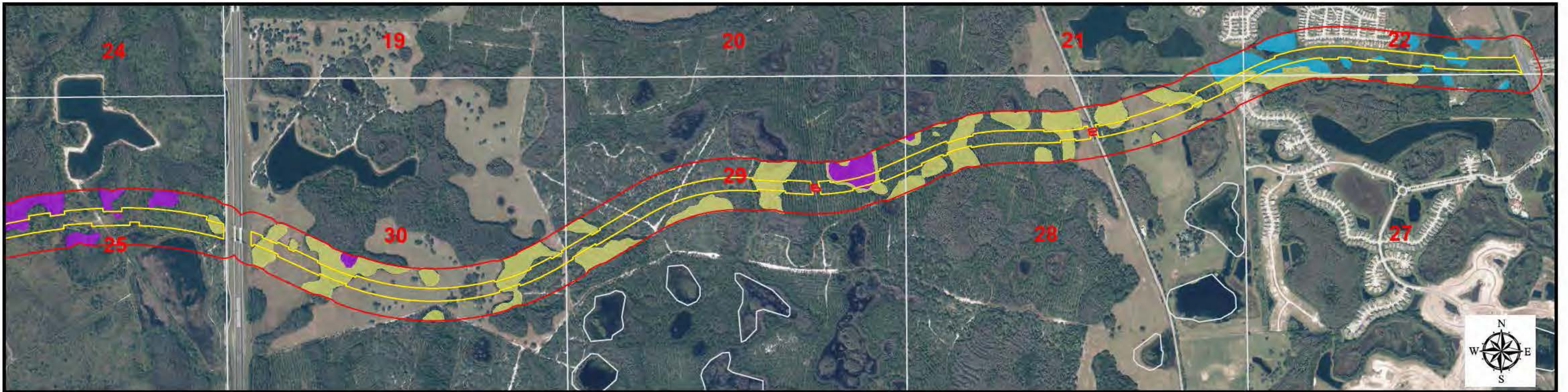
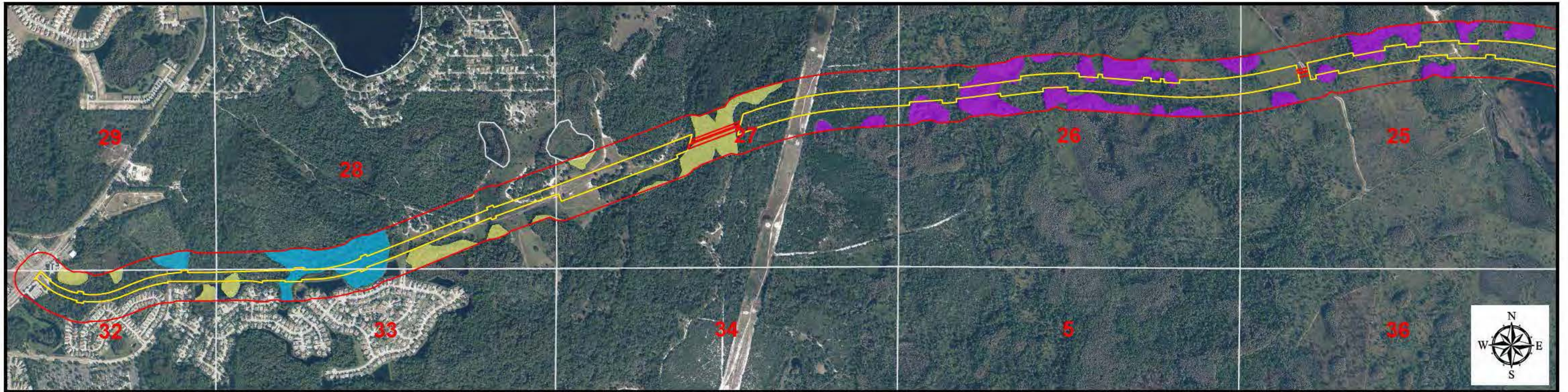
**Pasco County Florida**



**Ridge Road Extension  
Alternatives Analysis**

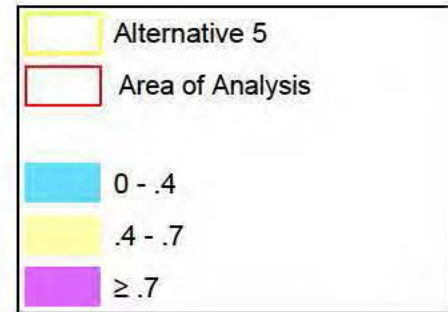
Drawn Dec. 2014

Project Number 5504-005 PDF Document Alt\_10\_wetlands\_1\_20141124.pdf



**Alternative 5. Wetland Quality Score**

0 750 1,500 3,000 Feet



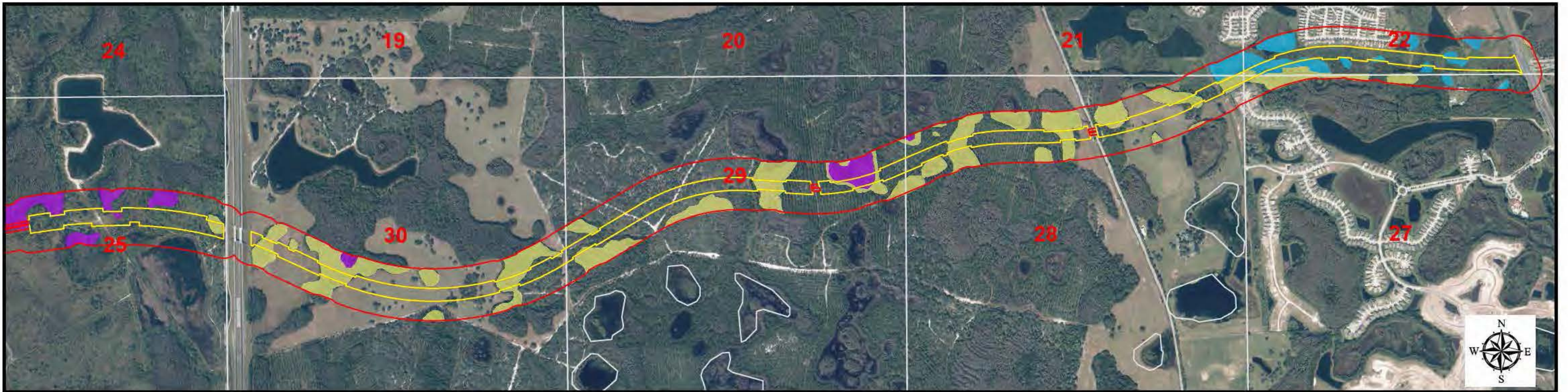
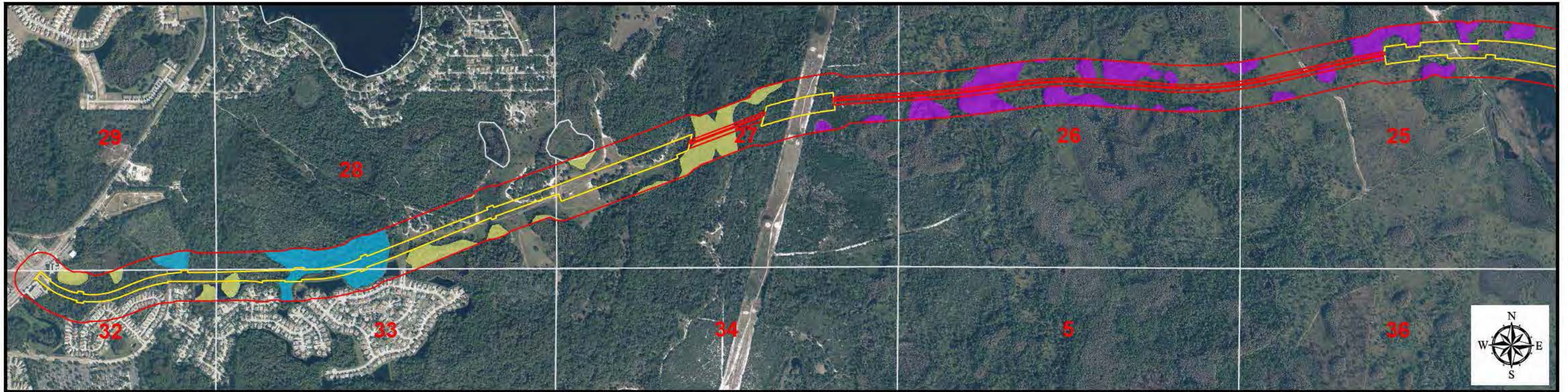
**Pasco County Florida**



**Ridge Road Extension  
Alternatives Analysis**

Drawn Dec. 2014

Project Number 5504-005 PDF Document Alt\_10\_wetlands\_1\_20141124.pdf



**Alternative 6. Wetland Quality Score**

0 750 1,500 3,000 Feet

- Alternative 6
- Area of Analysis
- 0 - .4
- .4 - .7
- $\geq .7$

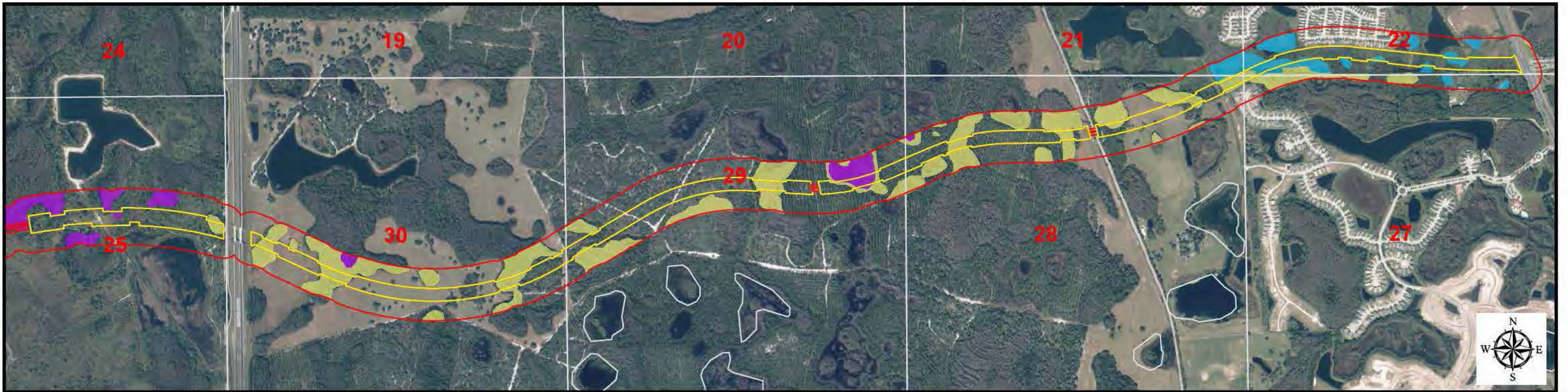
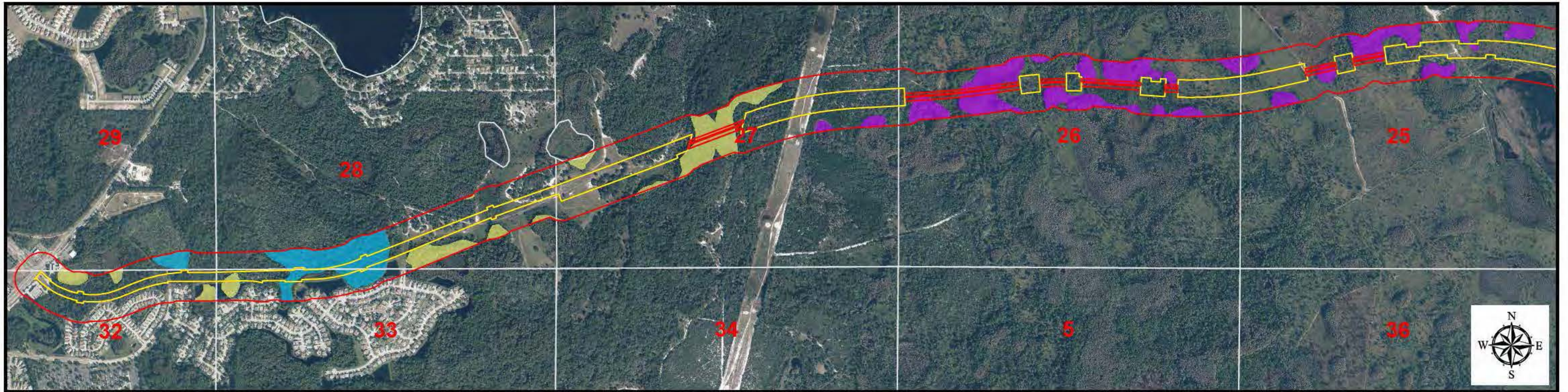
**Pasco County Florida**



**Ridge Road Extension  
Alternatives Analysis**

Drawn Dec. 2014

Project Number 5504-005 PDF Document Alt\_10\_wetlands\_1\_20141124.pdf



**Alternative 7. Wetland Quality Score**

0 750 1,500 3,000 Feet

- Alternative 7
- Area of Analysis
- 0 - .4
- .4 - .7
- $\geq .7$

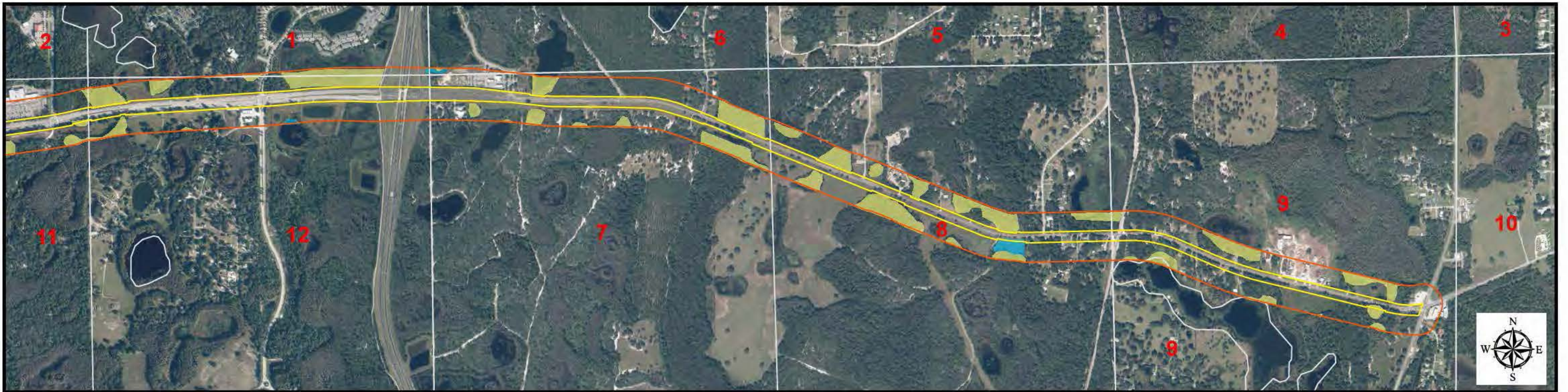
**Pasco County Florida**



**Ridge Road Extension  
Alternatives Analysis**

Drawn Dec. 2014

Project Number 5504-005 PDF Document Alt\_10\_wetlands\_1\_20141124.pdf



**Alternative 8. Wetland Quality Score**

0 750 1,500 3,000 Feet

- Alternative 8
- Area of Analysis
- 0 - .4
- .4 - .7
- ≥ .7

**Pasco County Florida**

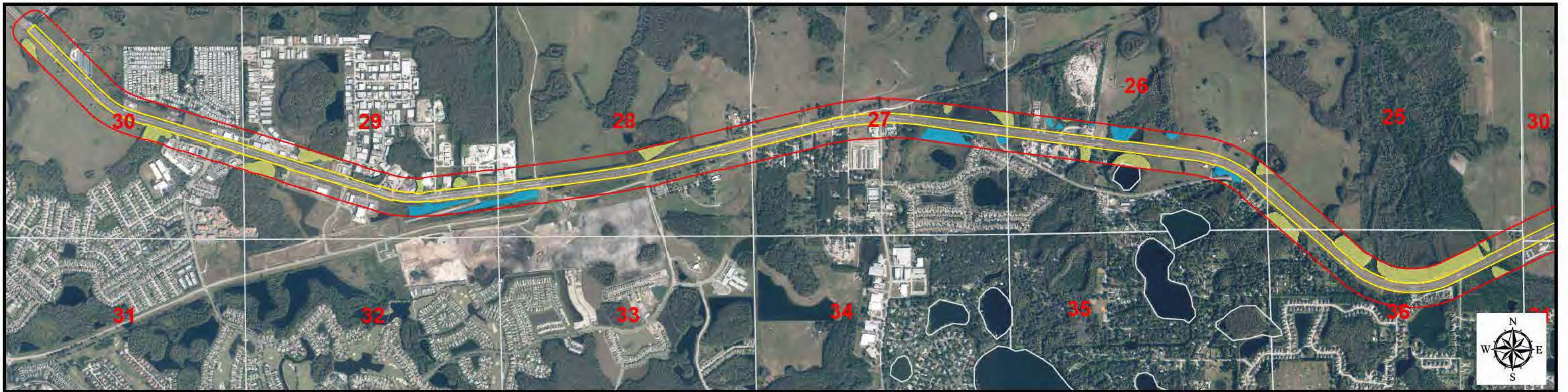
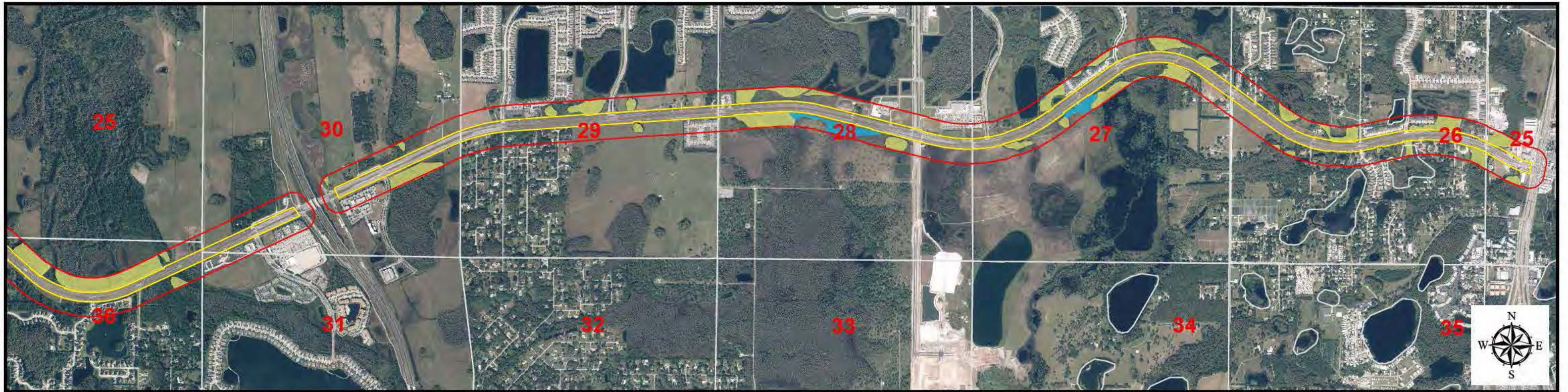


**Ridge Road Extension  
Alternatives Analysis**

Drawn Dec. 2014

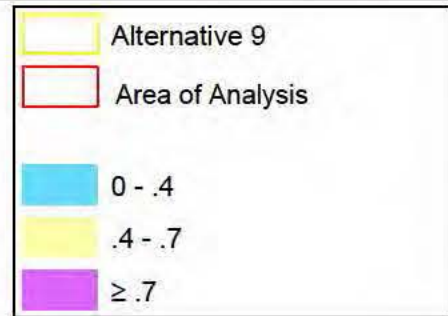
Project Number 5504-005 PDF Document Alt\_10\_wetlands\_1\_20141124.pdf





**Alternative 9. Wetland Quality Score**

0 1,000 2,000 4,000 Feet



**Pasco County Florida**



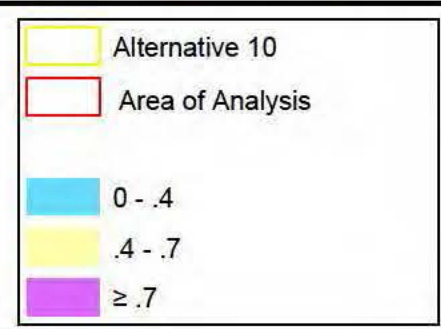
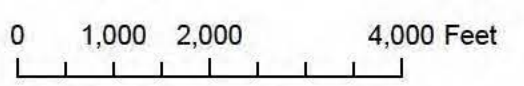
**Ridge Road Extension  
Alternatives Analysis**

Drawn Dec. 2014

Project Number 5504-005 PDF Document Alt\_10\_wetlands\_1\_20141124.pdf



**Alternative 10. Wetland Quality Score**



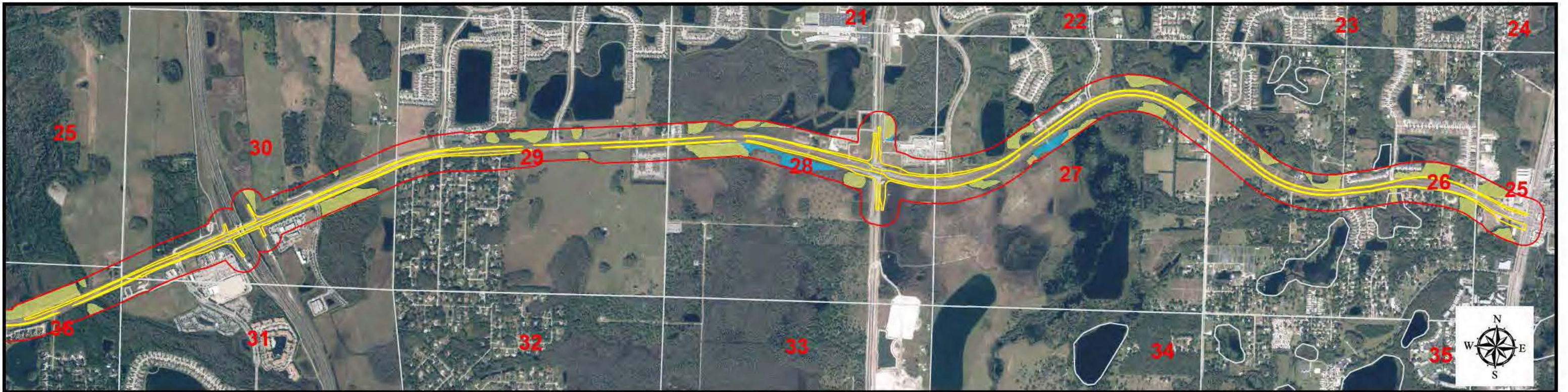
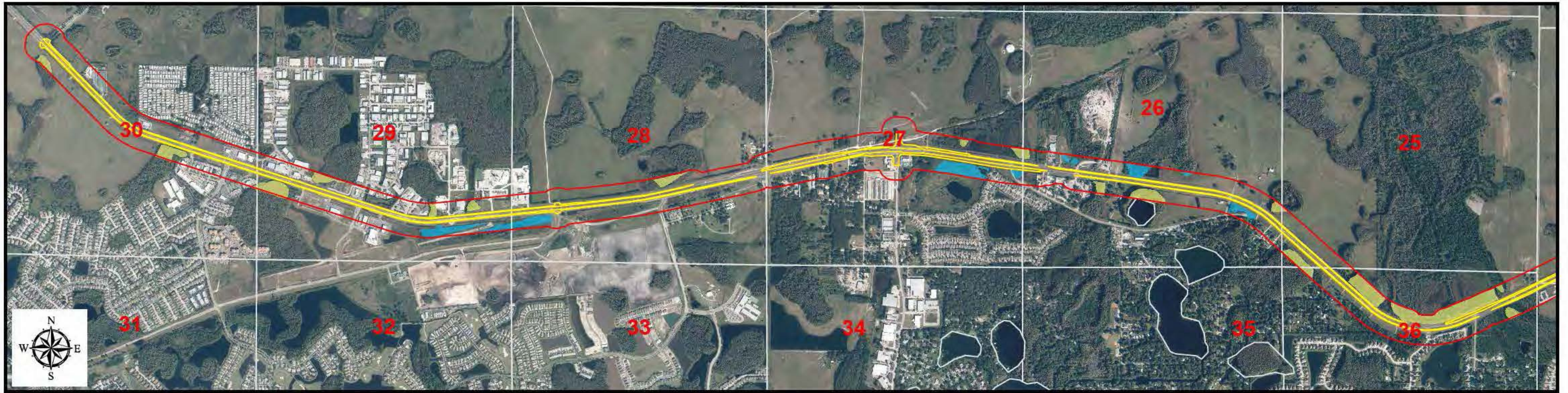
**Pasco County Florida**



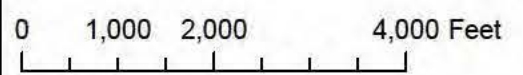
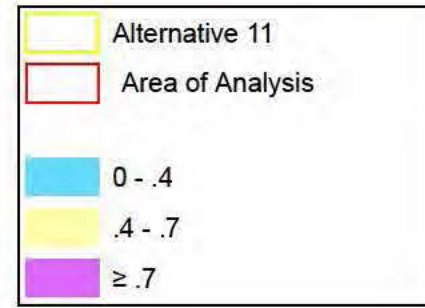
**Ridge Road Extension  
Alternatives Analysis**

Drawn Nov. 2014

Project Number 5504-005 PDF Document Alt\_10\_wetlands\_1\_20141124.pdf



**Alternative 11. Wetland Quality Score**



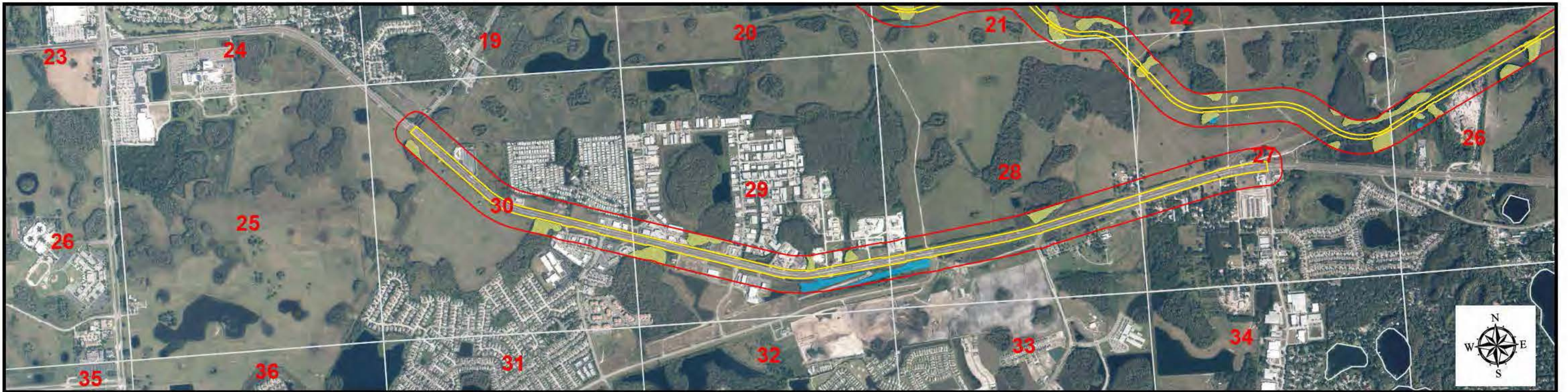
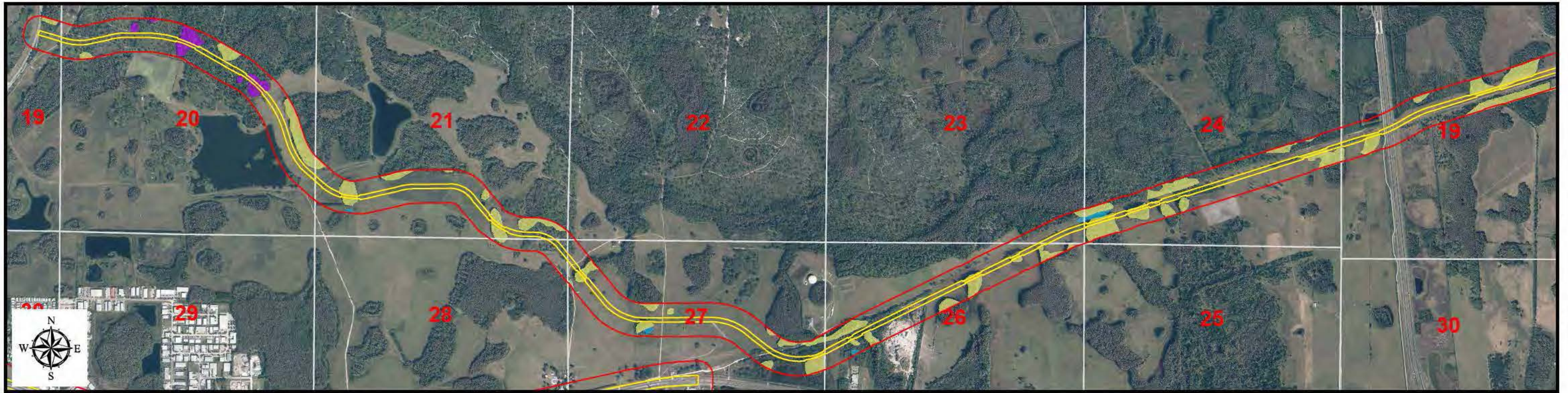
**Pasco County Florida**



**Ridge Road Extension  
Alternatives Analysis**

Drawn Dec. 2014

Project Number 5504-005 PDF Document Alt\_10\_wetlands\_1\_20141124.pdf



**Alternative 12. Wetland Quality Score**

0 1,000 2,000 4,000 Feet

- Alternative 12
- Area of Analysis
- 0 - .4
- .4 - .7
- ≥ .7

**Pasco County Florida**



**Ridge Road Extension  
Alternatives Analysis**

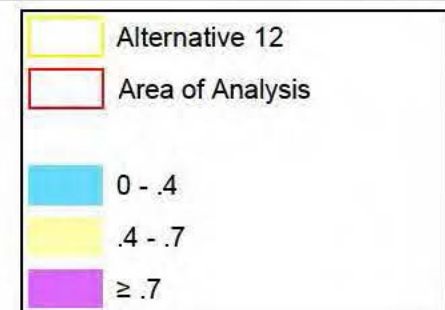
Drawn Dec. 2014

Project Number 5504-005 PDF Document Alt\_10\_wetlands\_1\_20141124.pdf



**Alternative 12. Wetland Quality Score**

0 1,000 2,000 4,000 Feet



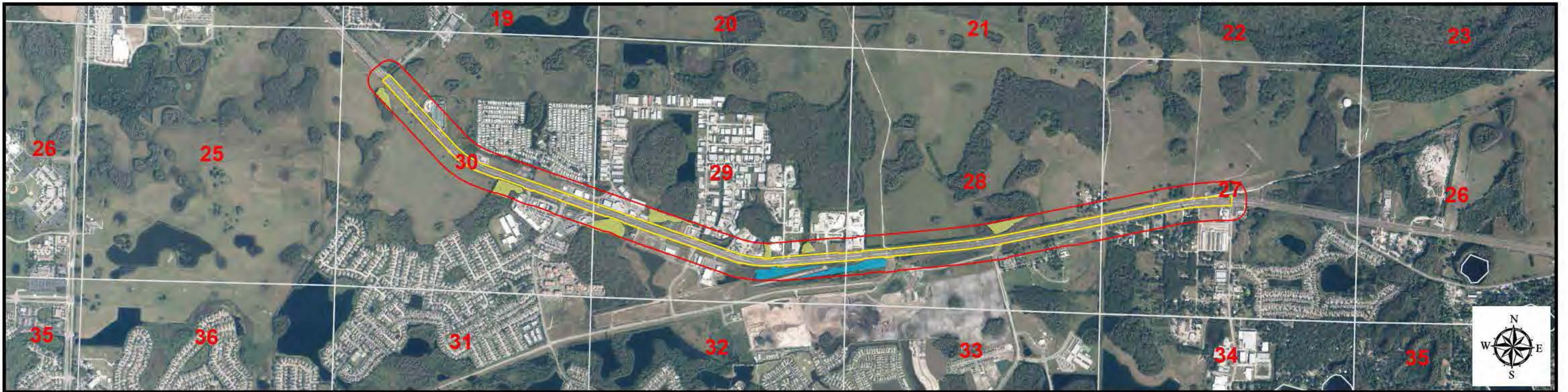
**Pasco County Florida**




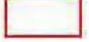



**Ridge Road Extension  
Alternatives Analysis**

Drawn Dec. 2014

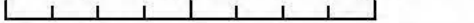
Project Number 5504-005 PDF Document Alt\_10\_wetlands\_1\_20141124.pdf



**Alternative 13. Wetland Quality Score**

-  Alternative 13
-  Area of Analysis
-  0 - .4
-  .4 - .7
-  ≥ .7

0 1,000 2,000 4,000 Feet



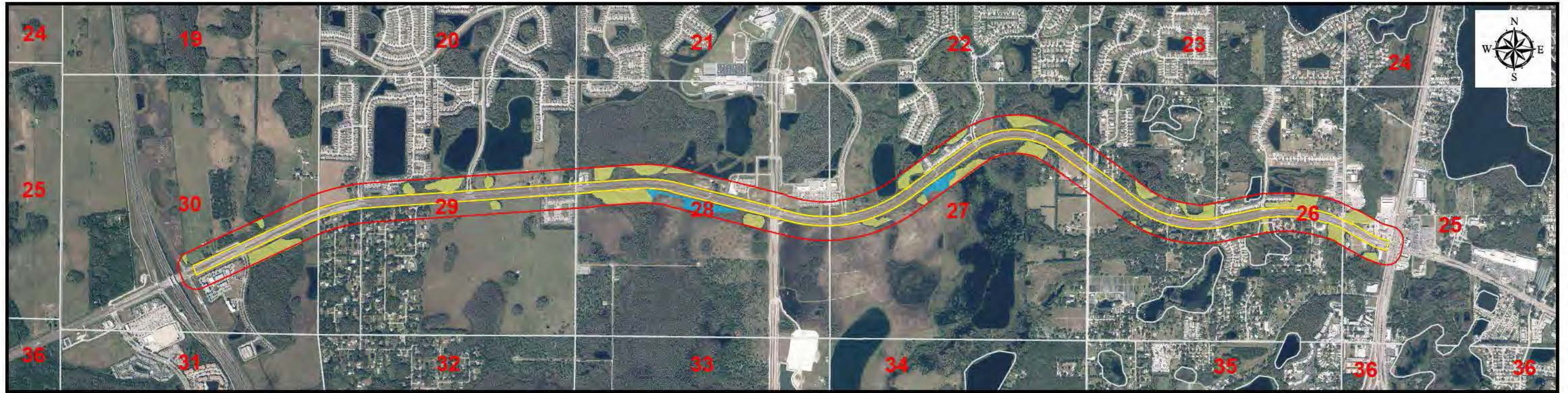
**Pasco County Florida**



**Ridge Road Extension  
Alternatives Analysis**

Drawn Dec. 2014

Project Number 5504-005 PDF Document Alt\_10\_wetlands\_1\_20141124.pdf



**Alternative 13. Wetland Quality Score**

0 950 1,900 3,800 Feet

- Alternative 13
- Area of Analysis
- 0 - .4
- .4 - .7
- ≥ .7

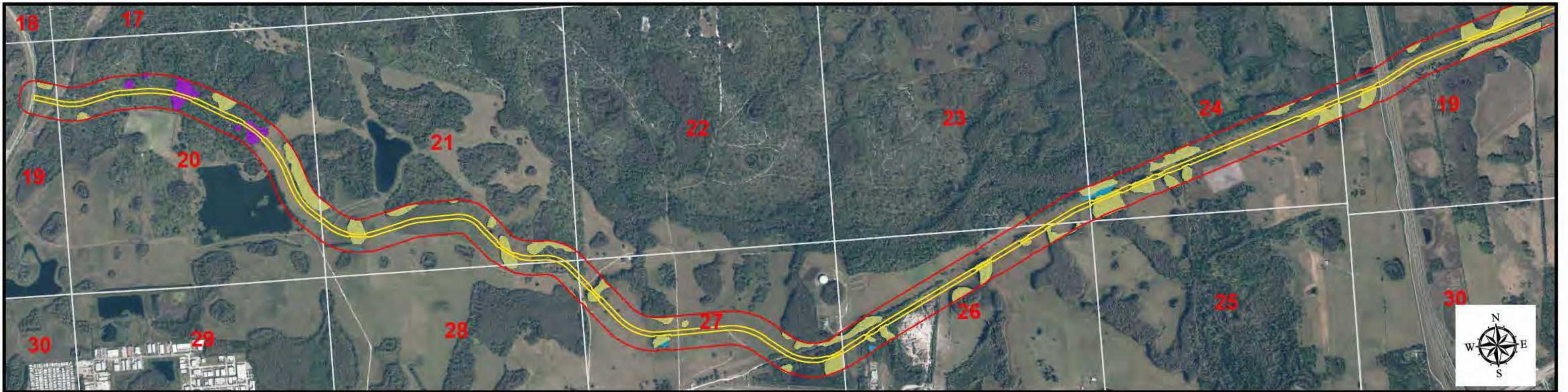
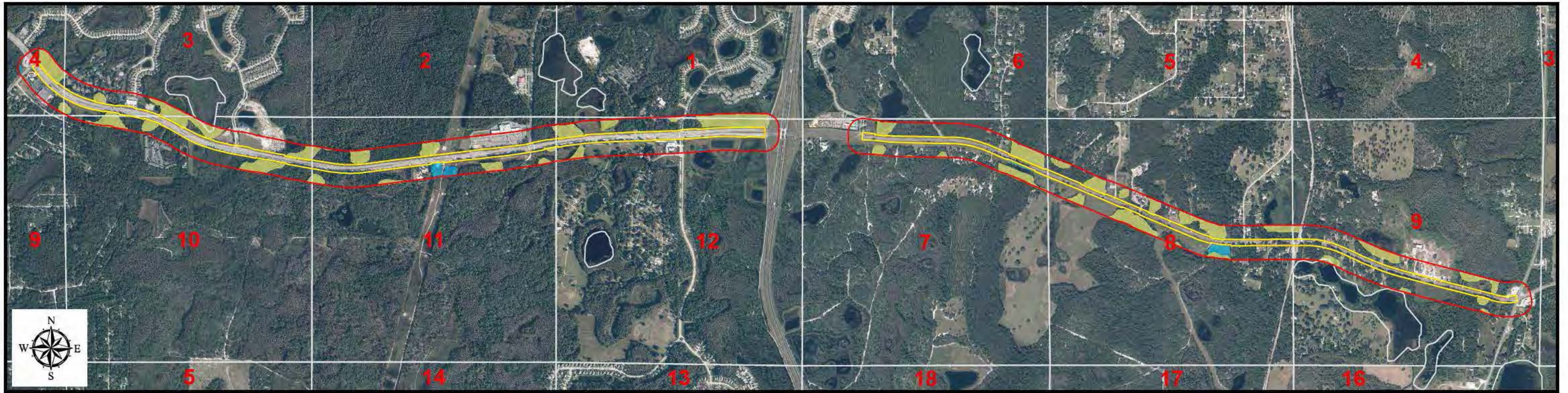
**Pasco County Florida**



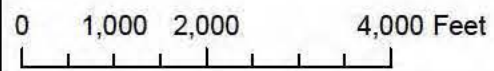
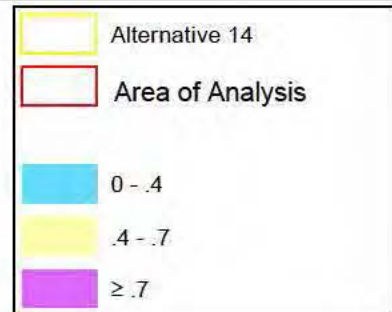
**Ridge Road Extension  
Alternatives Analysis**

Drawn Dec. 2014

Project Number SSD4-005 PDF Document Alt\_10\_wetlands\_1\_20141124.pdf



**Alternative 14. Wetland Quality Score**



**Pasco County Florida**



**Ridge Road Extension  
Alternatives Analysis**

Drawn Dec. 2014

Project Number 5504-005 PDF Document Alt\_10\_wetlands\_1\_20141124.pdf





**Alternative 14. Wetland Quality Score**

0 1,000 2,000 4,000 Feet

- Alternative 14
- Area of Analysis
- 0 - .4
- .4 - .7
- ≥ .7

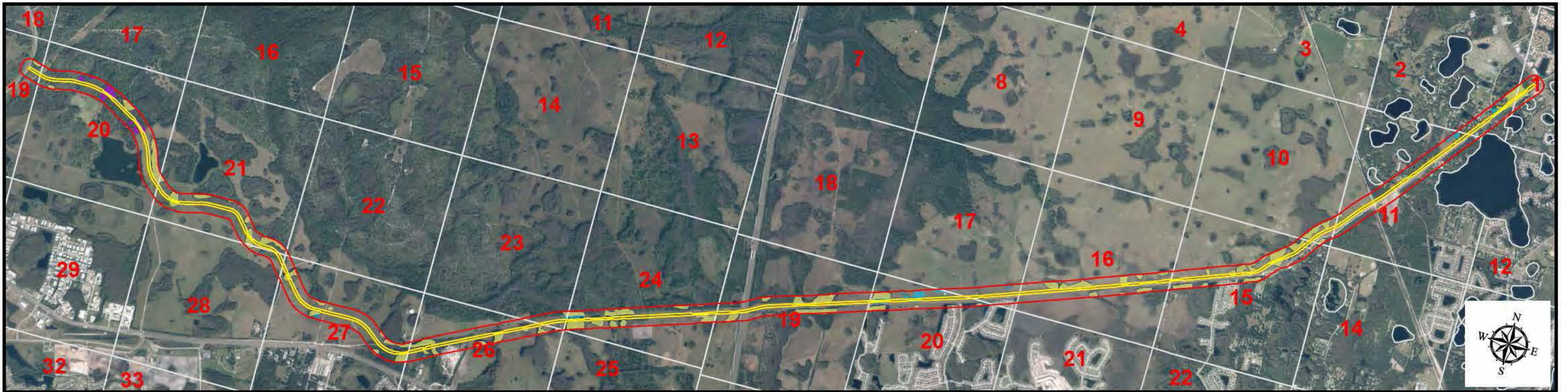
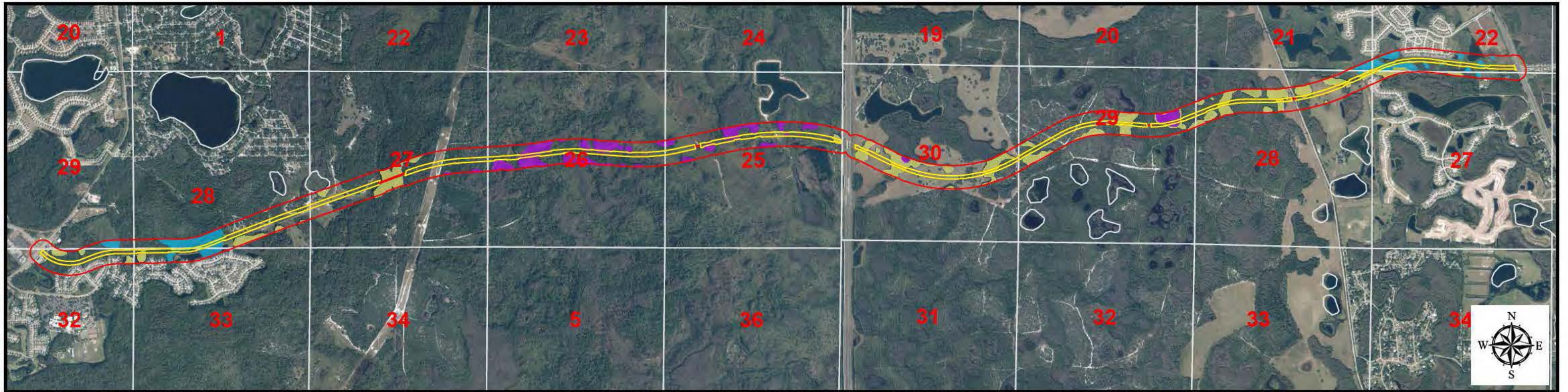
**Pasco County Florida**








**Ridge Road Extension  
Alternatives Analysis**

Drawn Dec. 2014

Project Number 5504-005 PDF Document Alt\_10\_wetlands\_1\_20141124.pdf



**Alternative 15. Wetland Quality Score**

-  Alternative 15
-  Area of Analysis
-  0 - .4
-  .4 - .7
-  ≥ .7

0 1,500 3,000 6,000 Feet

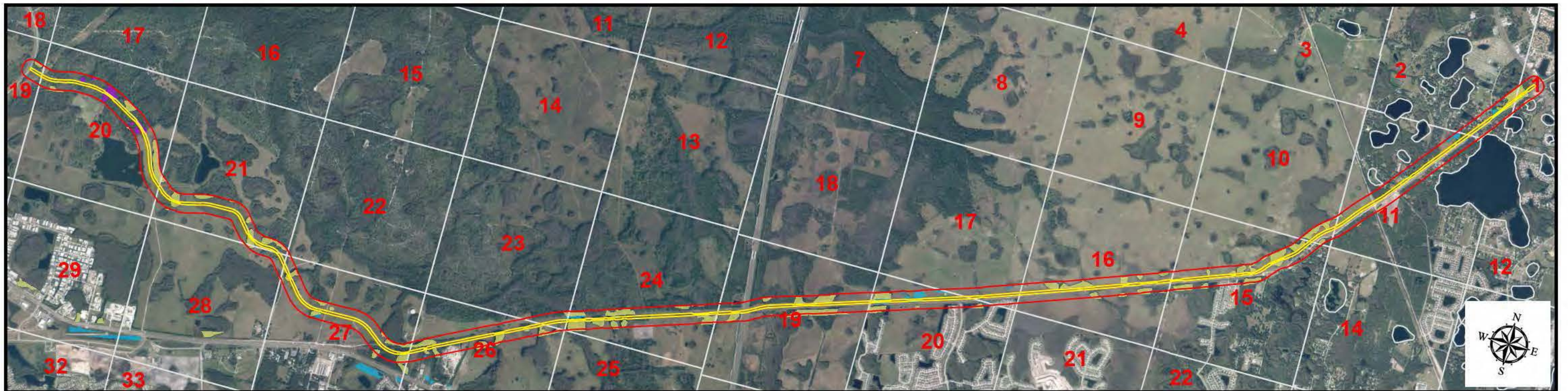
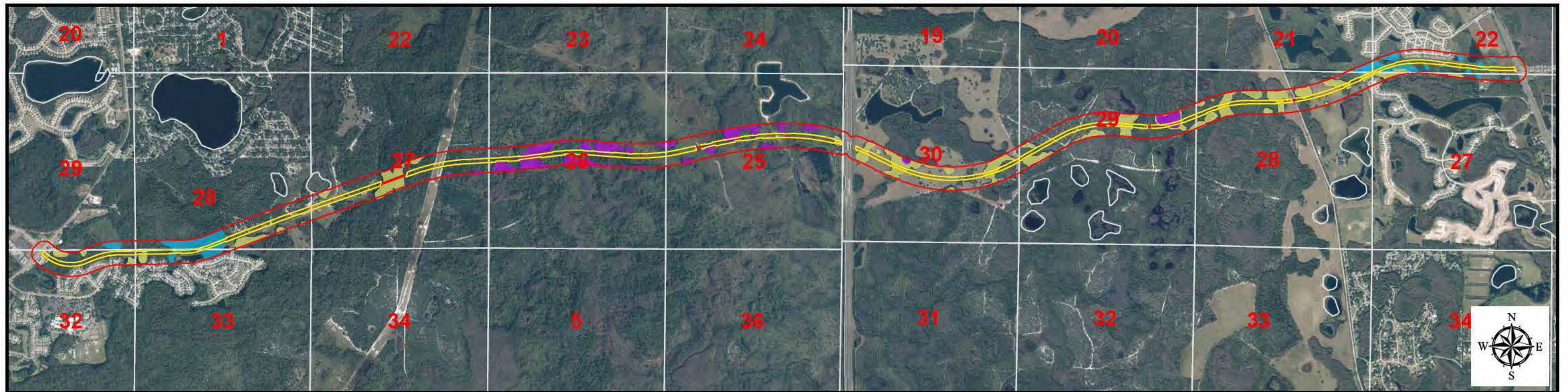
**Pasco County Florida**






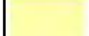

**Ridge Road Extension  
Alternatives Analysis**

Drawn Dec. 2014

Project Number 5504-005 PDF Document Alt\_10\_wetlands\_1\_20141124.pdf



**Alternative 16. Wetland Quality Score**

-  Alternative 16
-  Area of Analysis
-  0 - .4
-  .4 - .7
-  ≥ .7

0 1,500 3,000 6,000 Feet

**Pasco County Florida**



**Ridge Road Extension  
Alternatives Analysis**

Drawn Dec. 2014

Project Number 5504-005 PDF Document Alt\_10\_wetlands\_1\_20141124.pdf



**Alternative 17. Wetland Quality Score**

	Alternative 17
	Limits of Land Use Display
Quality Score	
	0 - .4
	.4 - .7
	≥ .7

**Pasco County Florida**



**Ridge Road Extension  
Alternatives Analysis**

Drawn Dec. 2014 Project Number 5504-005 PDF Document Alt\_10\_wetlands\_1\_20141124.pdf